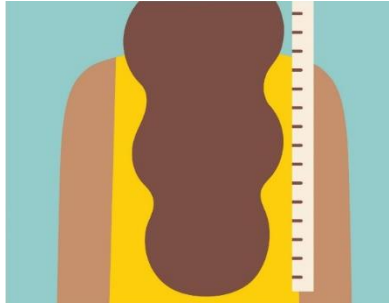


# #ShairYourHair

## DONATED HAIR HELPS LOLLY'S LOCKS MAKE WIGS FOR CANCER PATIENTS



1. Gather a tape measure, hair ties, and scissors.



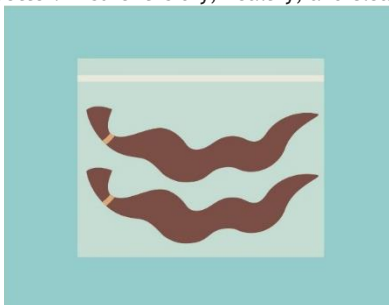
2. Measure your hair from the bottom for at least 12 inches of length. Longer is even better. Ensure it is dry, healthy, and clean.



3. Tie multiple separate and even ponytails, securing them with hair ties.



4. Remeasure to confirm your ponytails are at least 12 inches long. Cut above the rubber bands to keep the ponytails secure.



5. Place the ponytails in a ziploc bag, making sure to keep them elongated when packing to avoid tangling.



6. Mail your hair with a completed donation form to Lolly's Locks!

### #SHAIRYOURHAIRSTORY & PHOTOS WITH US!



/LollysLocks.org



@LollysLocks

## DONOR INFORMATION

Donor Name: \_\_\_\_\_ Email: \_\_\_\_\_

Street Address: \_\_\_\_\_ City, State, Zip: \_\_\_\_\_

We appreciate your hair donation, but there is still an enormous cost to having a wig made. I would like to make a donation of \$\_\_\_\_\_ to Lolly's Locks to help pay for a recipient's wig.

- Check enclosed (made payable to Lolly's Locks)
- Please charge the following credit card in the amount of \_\_\_\_\_.

Cardholder Name: \_\_\_\_\_ Card Number: \_\_\_\_\_

Exp. Date: \_\_\_\_\_ Sec Code: \_\_\_\_\_ Zip Code: \_\_\_\_\_

Signature: \_\_\_\_\_ Date: \_\_\_\_\_

Place DRY hair in a ziplock bag, keeping hair elongated to avoid tangling, and ship to  
Lolly's Locks • 7815 Woodmont Avenue, Lower Level • Bethesda, MD 20814